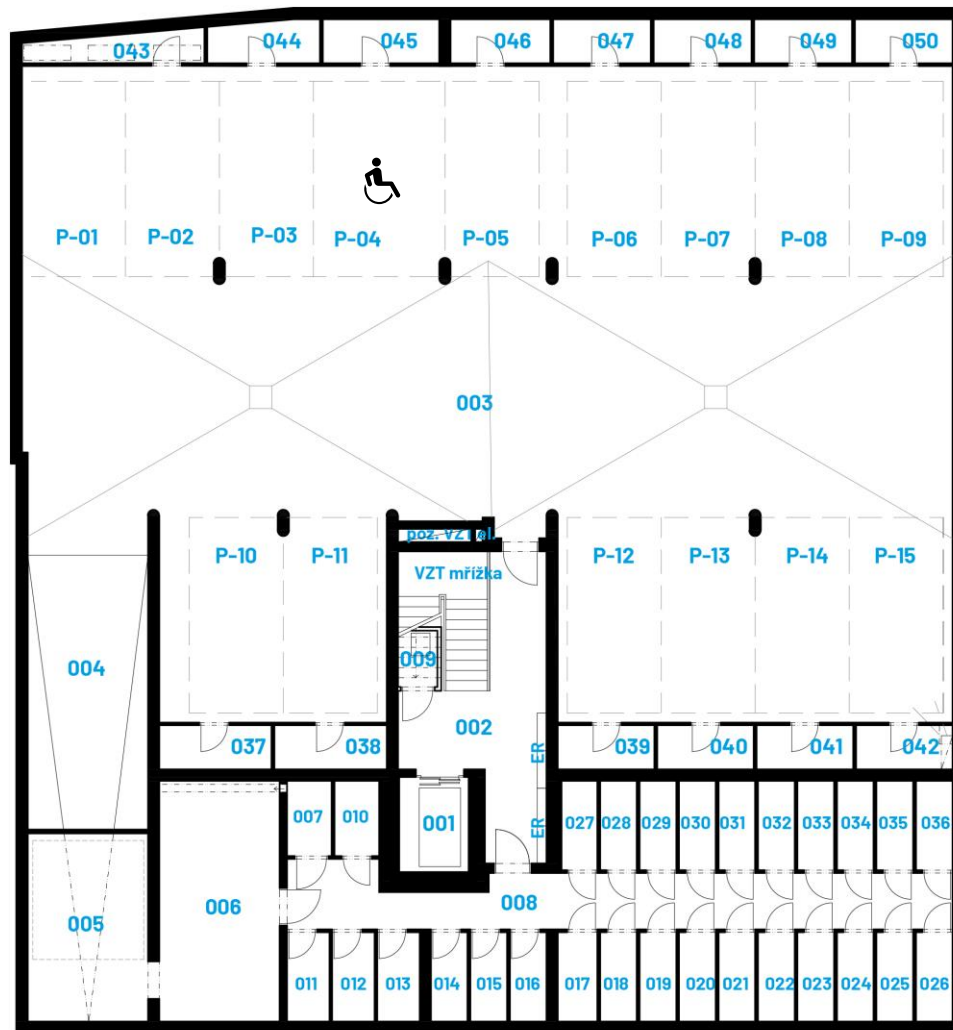


# Cellars

## 1st underground floor

010	Cellar cubicle	2,23 sq m
011	Cellar cubicle	2,67 sq m
012	Cellar cubicle	2,67 sq m
013	Cellar cubicle	2,67 sq m
014	Cellar cubicle	2,32 sq m
015	Cellar cubicle	2,32 sq m
016	Cellar cubicle	2,32 sq m
017	Cellar cubicle	2,49 sq m
018	Cellar cubicle	2,32 sq m
019	Cellar cubicle	2,32 sq m
020	Cellar cubicle	2,32 sq m
021	Cellar cubicle	2,32 sq m
022	Cellar cubicle	2,32 sq m
023	Cellar cubicle	2,32 sq m
024	Cellar cubicle	2,32 sq m
025	Cellar cubicle	2,32 sq m
026	Cellar cubicle	2,32 sq m
027	Cellar cubicle	2,26 sq m
028	Cellar cubicle	2,32 sq m
029	Cellar cubicle	2,32 sq m
030	Cellar cubicle	2,32 sq m

Building energy label:  
**B (very economical)**

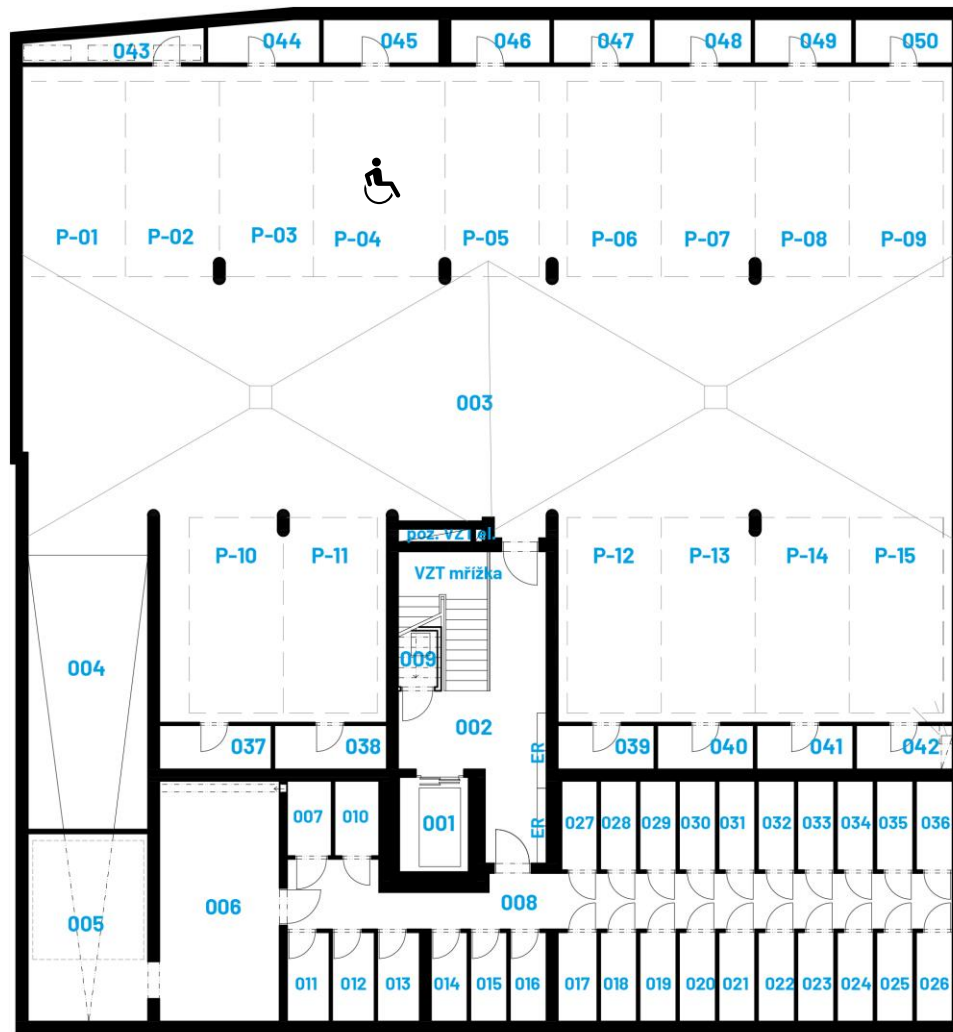
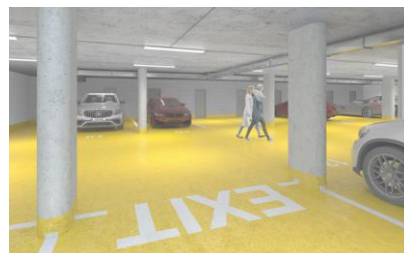


# Cellars

## 1st underground floor

031	Cellar cubicle	2,32 sq m
032	Cellar cubicle	2,32 sq m
033	Cellar cubicle	2,32 sq m
034	Cellar cubicle	2,32 sq m
035	Cellar cubicle	2,32 sq m
036	Cellar cubicle	2,32 sq m
037	Cellar cubicle	3,51 sq m
038	Cellar cubicle	3,51 sq m
039	Cellar cubicle	3,02 sq m
040	Cellar cubicle	3,02 sq m
041	Cellar cubicle	3,02 sq m
042	Cellar cubicle	3,02 sq m
043	Cellar cubicle	3,61 sq m
044	Cellar cubicle	3,27 sq m
045	Cellar cubicle	3,62 sq m
046	Cellar cubicle	3,10 sq m
047	Cellar cubicle	3,04 sq m
048	Cellar cubicle	3,04 sq m
049	Cellar cubicle	3,04 sq m
050	Cellar cubicle	3,04 sq m

Building energy label:  
**B (very economical)**



1:150  
0 1 2 3 4 5

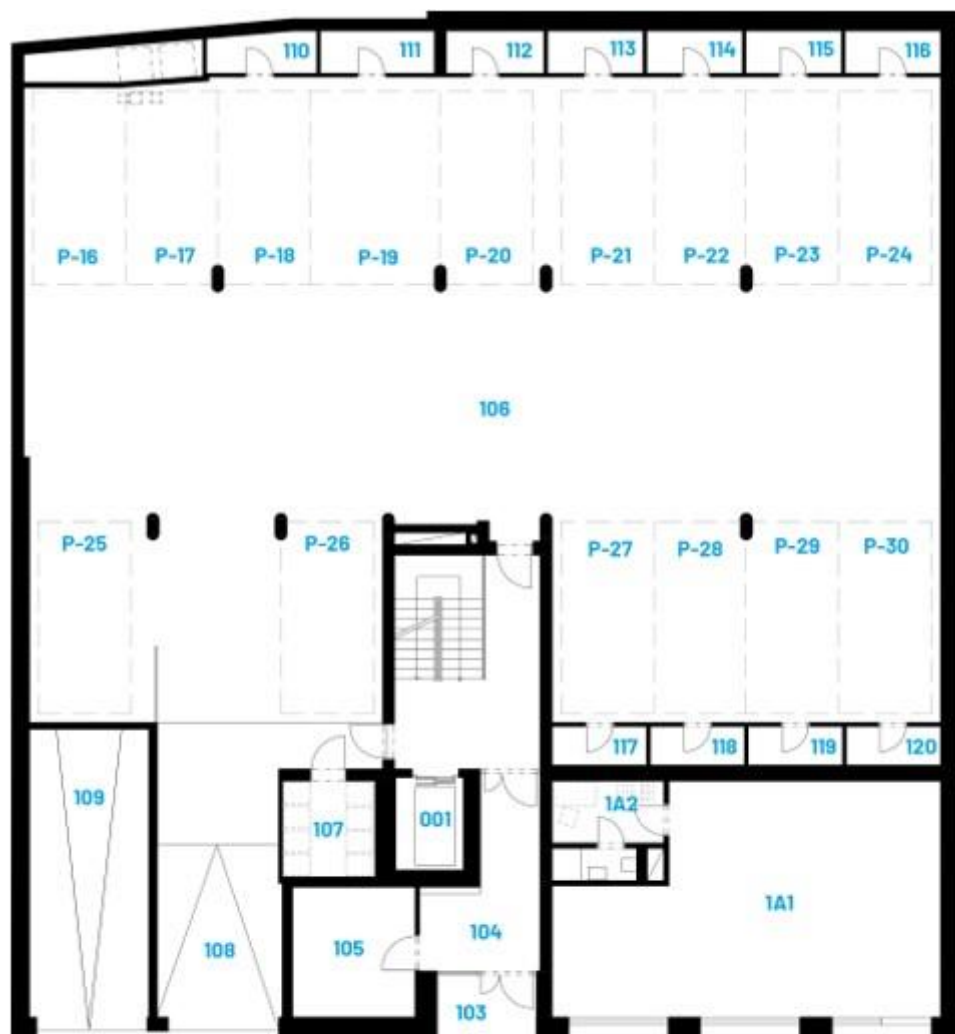
NOTICE: The stated data and illustrations are for non-binding informative purposes only and DOMOPLAN reserves the right to make changes. Up-to-date and binding data are available on request at the company's points of sale.

# Cellars

## 1st floor

110	Cellar cubicle	3,28 sq m
111	Cellar cubicle	3,64 sq m
112	Cellar cubicle	3,11 sq m
113	Cellar cubicle	3,06 sq m
114	Cellar cubicle	3,06 sq m
115	Cellar cubicle	3,06 sq m
116	Cellar cubicle	3,06 sq m
117	Cellar cubicle	2,76 sq m
118	Cellar cubicle	2,76 sq m
119	Cellar cubicle	2,76 sq m
120	Cellar cubicle	2,76 sq m

Building energy label:  
**B (very economical)**



Entrance to the  
1st underground  
floor 205,95

Entrance to the  
1st floor 206,05

Main entrance  
to the building

Entrance to the  
commercial space

