

Apartment 2F

1+kk

Floor 2nd

Orientation N

2F1 Hall 5,22 sq m

2F2 Bathroom 3,48 sq m

2F3 Living room 20,08 sq m

Partitions 1,21 sq m

Floor area 29,99 sq m

2F4 Loggia 2,99 sq m

Total sales area 32,98 sq m

Accessories included:

Loggia

Accessories for extra charge - compulsory:

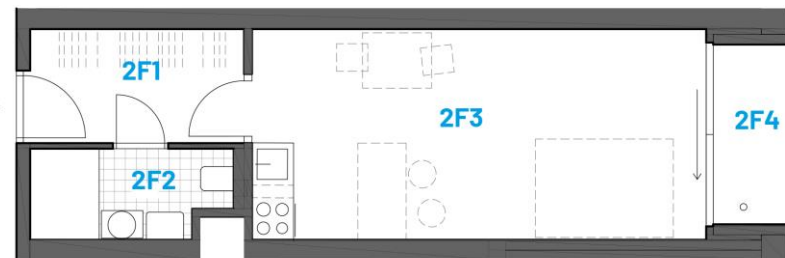
Cellar

Building energy label:

B (very economical)



2F ▶



NOTICE: The stated data and illustrations are for non-binding informative purposes only and DOMOPLAN reserves the right to make changes. Up-to-date and binding data are available on request at the company's points of sale.