

Apartment 7C

2+kk

Floor	7th
Orientation	N

7C1	Hall	5,81 sq m
7C2	Bathroom	4,31 sq m
7C3	Living room	38,64 sq m
7C4	Bedroom	12,86 sq m
	Partitions	3,05 sq m
Floor area		64,67 sq m
7C5	Loggia	4,03 sq m
Total sales area		68,70 sq m

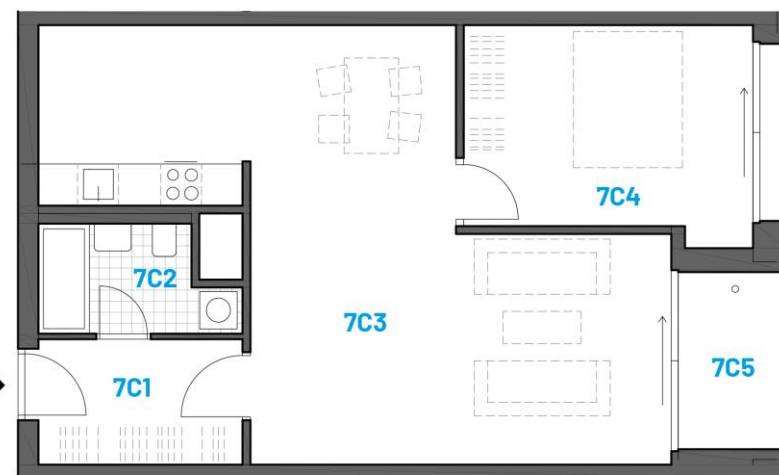
Accessories included:
Loggia

Accessories for extra charge:
Indoor parking space
Cellar

Building energy label:
B (very economical)



7C →



NOTICE: The stated data and illustrations are for non-binding informative purposes only and DOMOPLAN reserves the right to make changes. Up-to-date and binding data are available on request at the company's points of sale.